

**Wallingford Recreation Committee  
Meeting Minutes  
May 16, 2024, 5:30 PM**

Committee members: Shannon Pytlik, Sandra Hochberg, Mark Noble (arrived at 6) & David Cornwell (left at 6:30)

Members missing: Brian Ferguson

Public Present: none

Call meeting to order – Shannon called the meeting to order at 5:30

Approve agenda - Agenda approved by consensus

Public comment - None

Approve minutes from 04/11/24 & 5/02/24 - tabled

**BUDGET**

Rec received an updated budget from Julie. We received a number of donations and have not spent the youth sports and rec program line items yet. We have until mid- June to spend those funds.

Town of Wallingford Profit & Loss Budget vs. Actual July 1, 2023 through May 9, 2024				
	Jul 1, '23 - May 9, 24	Budget	\$ Over Budget	% of Budget
<b>RECREATION EXPENSES</b>				
5801 · Elfin Lake Salaries	10,162.65	10,400.00	-237.35	97.7%
5901 · Summer Rec. Salaries	8,962.20	8,600.00	362.20	104.2%
5803 · Telephone	256.97	325.00	-68.03	79.1%
5804 · Electric	547.30	450.00	97.30	121.6%
5805 · Maintenance	1,457.15	2,500.00	-1,042.85	58.3%
5806 · Portable Restroom	1,075.00	1,375.00	-300.00	78.2%
5807 · Field Trips	2,032.03	1,800.00	232.03	112.9%
5808 · Lake Expenses	395.33	525.00	-129.67	75.3%
5809 · Recreation Expenses	525.60	400.00	125.60	131.4%
5810 · Lake Concessions	1,348.30	1,300.00	48.30	103.7%
5812 · Mowing	2,550.00	3,000.00	-450.00	85.0%
5814 · Youth Sports	0.00	500.00	-500.00	0.0%
5816 · Wallingford Day	-1,983.59	-1,750.00	233.59	113.3%
5817 · Recreation Programs	0.00	750.00	-750.00	0.0%
<b>Total RECREATION EXPENSES</b>	<b>31,296.12</b>	<b>33,675.00</b>	<b>-2,378.88</b>	<b>92.9%</b>

~~1983.59~~  
29,253.61  
  
 - 1750.00  
31,925  
 + 1200 uncashed ck - water line  
 400 - Wayne Kelly donations  
 650 - Ed Lord "  


---

 34,175

The group discussed the priorities on the wish list they have compiled. The small soccer goals are being used regularly. Members have seen kids showing up with soccer gear to play at the park. The group discussed options for laying out the field such that we could have a small soccer field near the basketball field (U6 size) and then a full-size soccer field further south for

teens/adults. There is space for both, and the group thinks this is a good way to spend the rec budget and/or donations.

The Rec committee has the following priorities to present to the selectboard Monday for discussion and approval. Rec program budget line item & donations remaining are approximately \$4,900. The recreation committee proposed spending the remaining funds as follows. Shannon will connect with Lawrie to see if camp needs anything.

<b>Budget remaining</b>	\$4,921.39
Water at park	\$1,000
Soccer goals	\$1,200
Painting at lake	\$500
Gates for MS	\$300
Inspection lake bldg	\$1,000
Camp shirts	?
Other camp supplies?	?

The rfp was released for water at the park. Bids are due 5/24. The fixture has arrived and is nice.

The group discussed the need to develop a capital improvement plan for the building at the lake.

The building needs repairs and we would need more information to prioritize the work. The work we are aware of includes:

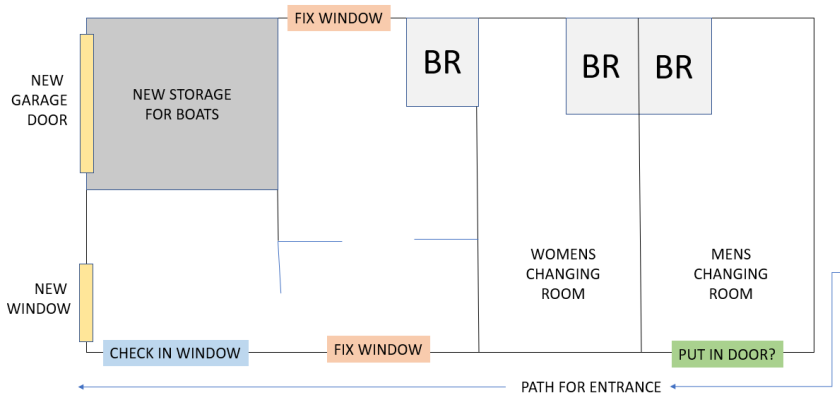
- Update bathrooms
- Add mens bathroom with changing rooms
- Replace boarded up windows
- Unsure about the plumbing – very expensive repairs in recent years
- Better storage for boats closer to water

There may be options for improving the traffic flow and layout of the building to accommodate some of the needs. The group reviewed a proposed layout and decided to propose some funding be used to:

- 1) Inspect the building by a local contractor to determine needs and estimated costs for repairs – to use in developing a capital improvement plan
- 2) Get estimates to create a better layout for the building

The information gained could be used to apply for grants to implement any changes as there is a lot of money available for recreation facilities currently.

One option or a building layout:



### Meadow St Park maintenance needs

The baseball field repairs are coming along nicely with all volunteer labor. Approximately 100 hours have been spent working on the fields collectively. The coaches from RCLL have done a lot of the work, as well as Mark noble from rec.

The south field could use more clay. The group discussed asking the Selectboard to purchase 2 more loads of clay and see if the town road crew can town transport it for us.

There is an orange snow fence (apx 500') and metal fence posts in the shed at the park. We should see if the town can use it somewhere as it is not appropriate for the fields.

### Elfin Lake

Painting - Shannon contacted 5 painters to get estimates to paint the chipping paint on the beach building, mostly the lower 1-2' of the building. The painters she has spoken with are too busy. One person did offer to do the work so we will discuss the details with them.

Schedule workday for Elfin Lake June 9<sup>th</sup> at 8 AM

### Updates:

Flood Grant – no update

Come Alive Outside boat offer – discuss with Selectboard May 20<sup>th</sup>

### Memorial Day Parade

Rec met with the local sheriff and constable, and we have a plan for traffic control for the parade.

### Future Rec Ideas

Chess night – Sandra will pick this up in the fall

Drop in pickle ball / soccer / baseball/ basketball etc – no update

Walking group – no update

Community potluck – Group discussed hosting a community potluck at Elfin lake in late August. We will ask the Selectboard if we can have a free night at the lake and hire a lifeguard to host a community gathering.

Meeting adjourned at 7:18 PM